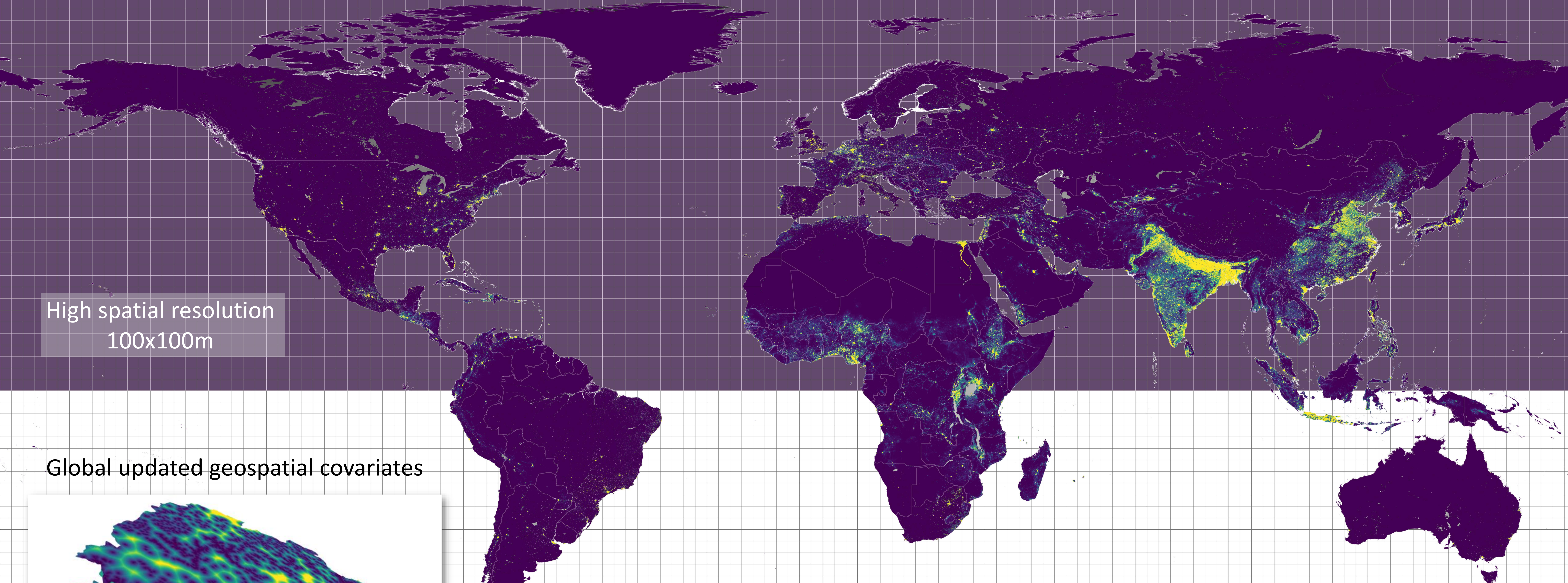


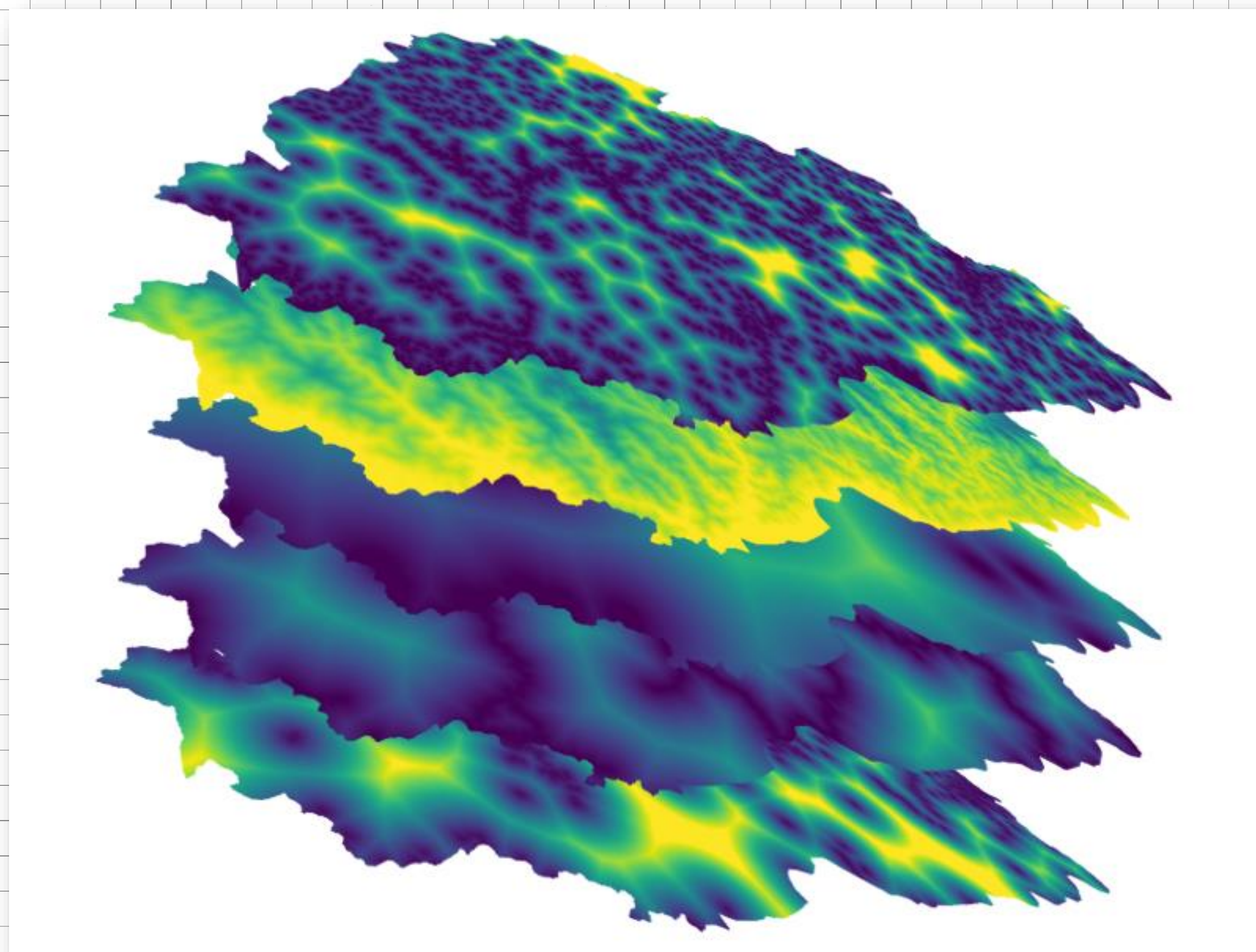
WorldPop Global Demographic Data

New global age-sex structured population datasets for the 2015-2030 period, which incorporate the latest round of censuses.



High spatial resolution
100x100m

Global updated geospatial covariates



- Recent official boundary-matched subnational population and demographic data (from the 2010 and 2020 round of censuses, official estimates, projections and household surveys).
- Updated and improved geospatial covariates related to population presence.
- Improved global time-series settlement and building footprint datasets.
- Improved method for modeling of annual built-settlement growth, between 2015 and 2030
- Improved methodology for the interpolation and extrapolation/forecasting of annual subnational population and age-sex group counts between 2015 and 2030.